

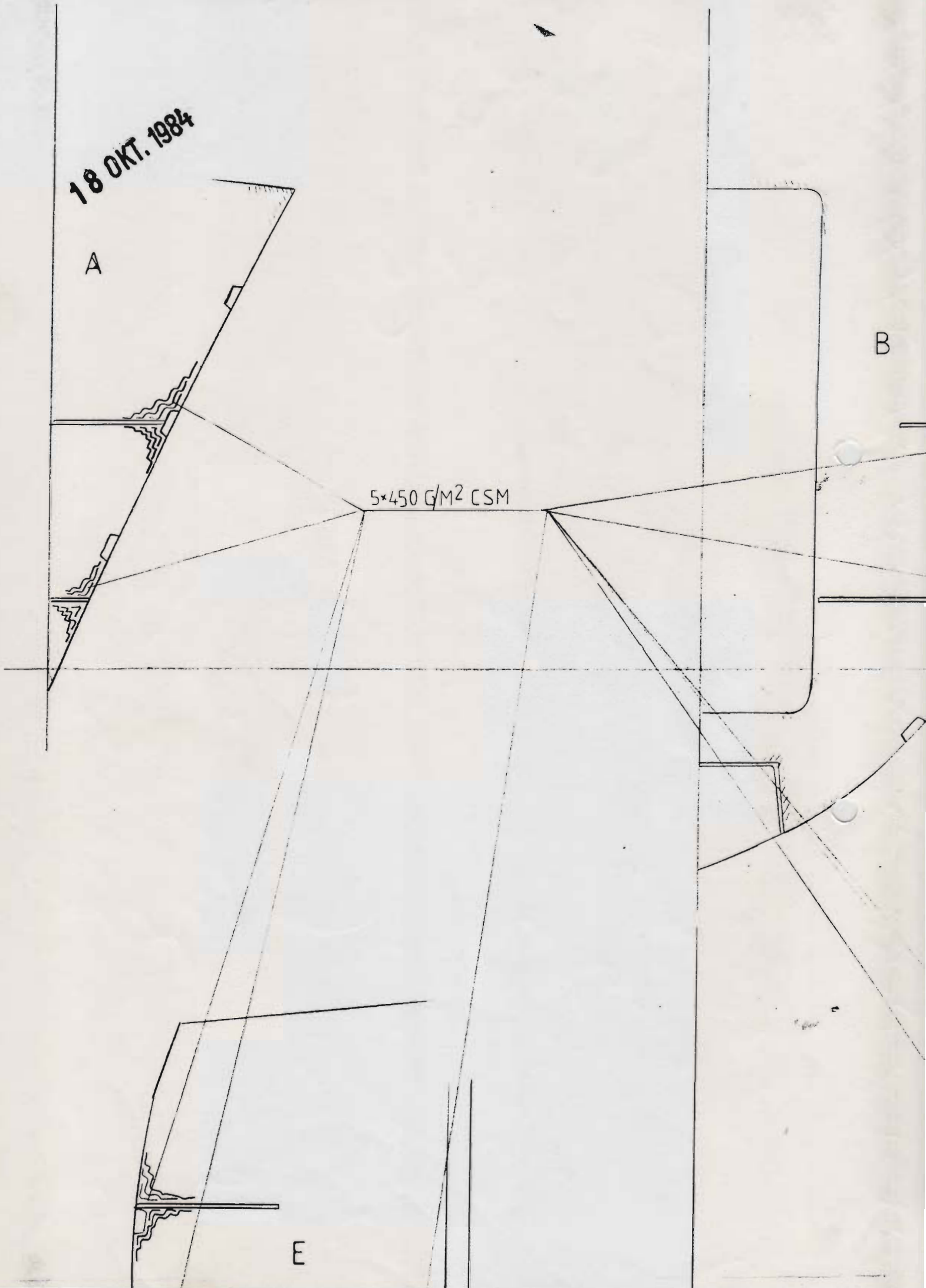
18 OKT. 1984

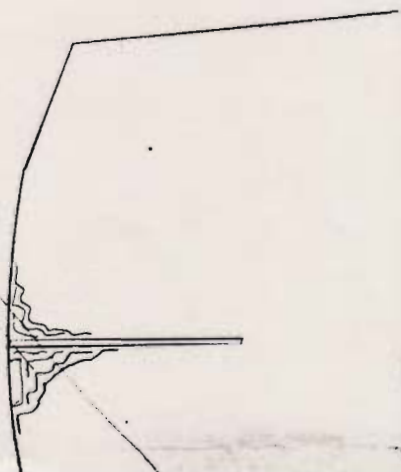
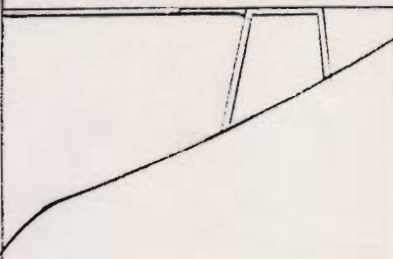
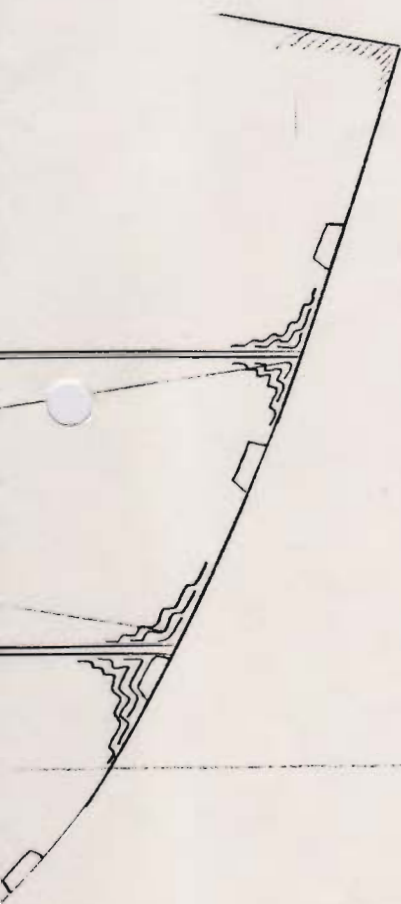
A

B

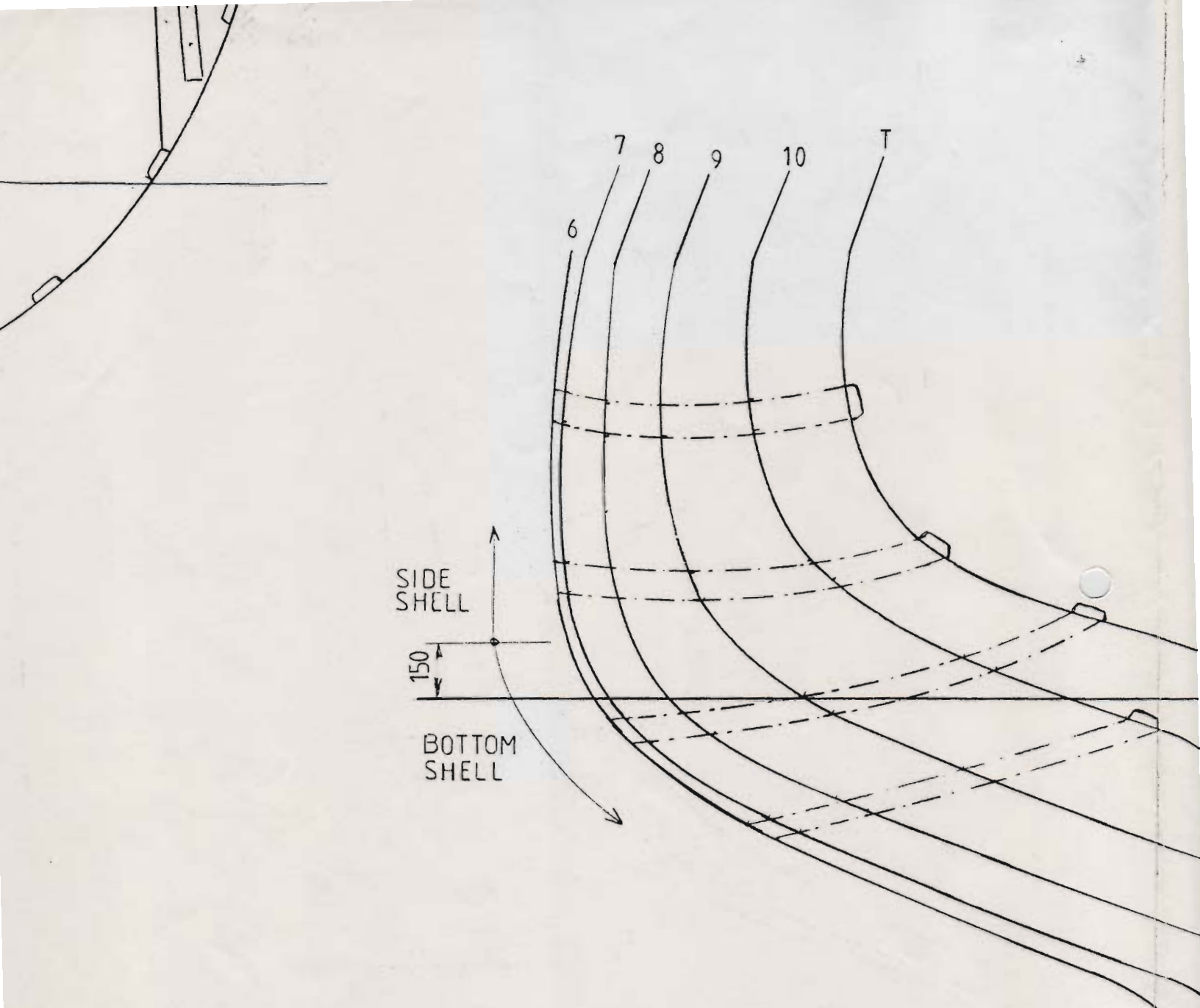
5*450 G/M² CSM

E





F



Taper of laminate not less than 25mm. per 600 g/m² reduction in weight.

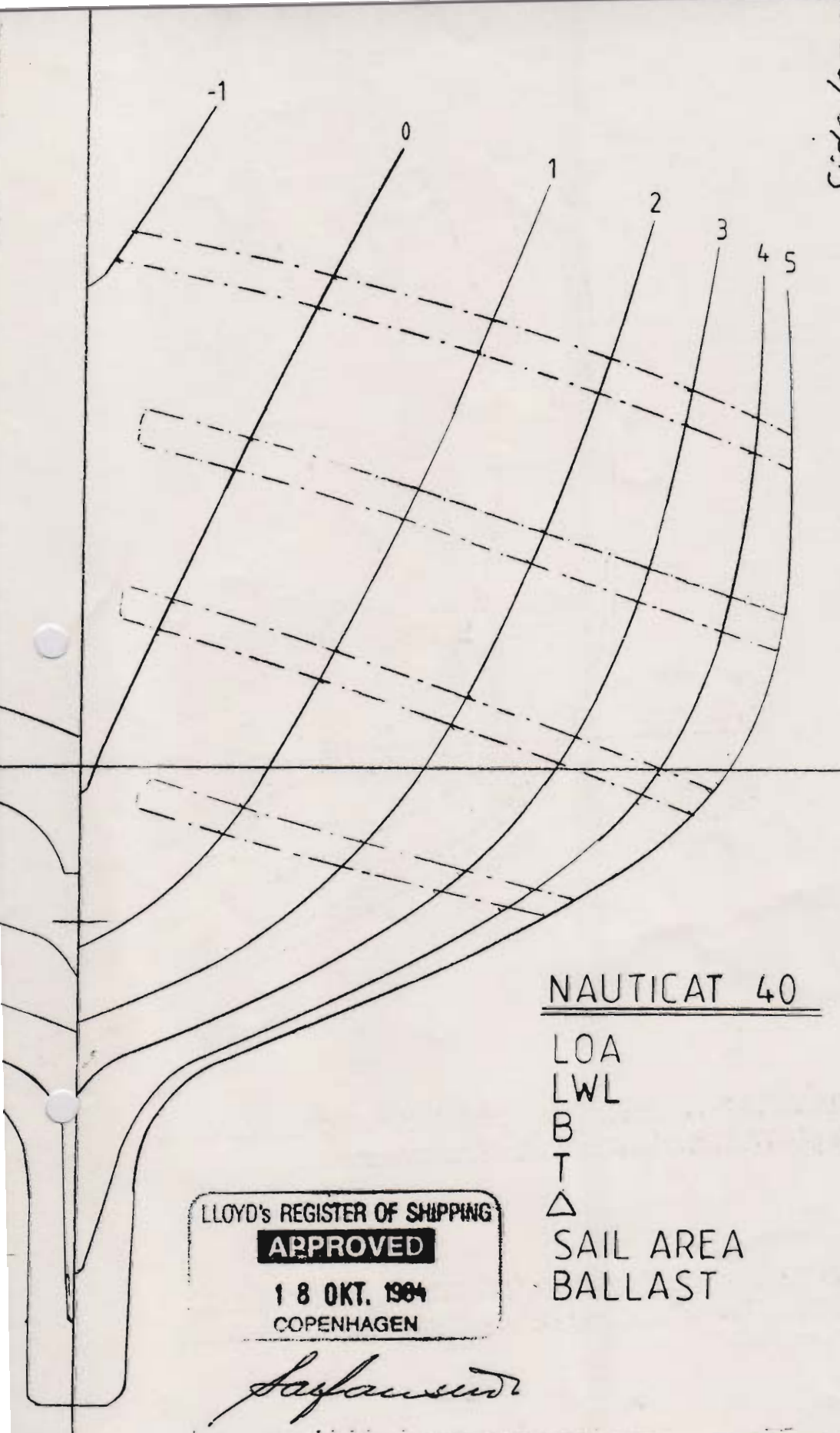
Keel width and weight carried aft to transom and forward to stem head.

FIN & TUCK

KEEL

535

Side longi
Bottom longi



NAUTICAT 40

LOA	12,0 M
LWL	10,0 M
B	4,0 M
T	1,75 M
△	14,0 T
SAIL AREA	100,9 M ²
BALLAST	4,0 T

LLOYD'S REGISTER OF SHIPPING
APPROVED
18 OKT. 1984
COPENHAGEN

Safarinen



SILTALA YACHTS
SF-21870 RIIHIKOSKI
FINLAND
TEL 921-861500 TELEX 62-330

MAIN DIMENSIONS
STRINGER PLAN

DRAWER	DATE	SCALE	DRAWING NR
	1987	1:16	
NAUTICAT 40			LR 1